



# One Octave Major Scales

Courtesy of:  
Gilbert DeBenedetti

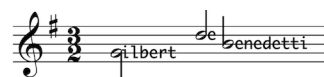
Handwritten musical notation for the C Major scale. The treble clef staff shows the ascending scale: C4, D4, E4, F4, G4, A4, B4, C5. The bass clef staff shows the descending scale: C5, B4, A4, G4, F4, E4, D4, C4. Fingering numbers (1, 3, 1, 5, 5, 1, 3, 1) are placed above the treble staff, and (5, 1, 3, 1, 1, 3, 1, 5) are placed below the bass staff.

Handwritten musical notation for the D Major scale. The treble clef staff shows the ascending scale: D4, E4, F#4, G4, A4, B4, C#5, D5. The bass clef staff shows the descending scale: D5, C#5, B4, A4, G4, F#4, E4, D4. Fingering numbers (1, 3, 1, 5, 5, 1, 3, 1) are placed above the treble staff, and (5, 1, 3, 1, 1, 3, 1, 5) are placed below the bass staff.

Handwritten musical notation for the E Major scale. The treble clef staff shows the ascending scale: E4, F#4, G#4, A4, B4, C#5, D#5, E5. The bass clef staff shows the descending scale: E5, D#5, C#5, B4, A4, G#4, F#4, E4. Fingering numbers (1, 3, 1, 5, 5, 1, 3, 1) are placed above the treble staff, and (5, 1, 3, 1, 1, 3, 1, 5) are placed below the bass staff.

Handwritten musical notation for the F# Major scale. The treble clef staff shows the ascending scale: F#4, G#4, A4, B4, C#5, D#5, E5, F#5. The bass clef staff shows the descending scale: F#5, E5, D#5, C#5, B4, A4, G#4, F#4. Fingering numbers (1, 3, 1, 5, 5, 1, 3, 1) are placed above the treble staff, and (5, 1, 3, 1, 1, 3, 1, 5) are placed below the bass staff.

Get your *FREE* music at:  
[www.gmajormusictheory.org](http://www.gmajormusictheory.org)



1 3 1 5 5 1 3 1

5 1 3 1 1 3 1 5

1 3 1 5 5 1 3 1

4 1 4 1 1 4 1 4

The F# scale is the same on the keyboard as G $\flat$ ; they are *enharmonic equivalents*.

2 1 2 1 2 1 3 1 4 2

4 1 3 1 2 2 1 2 1 2 4

The G $\flat$  scale is the same on the keyboard as F#; they are *enharmonic equivalents*.

2 1 2 1 2 1 3 1 4 2

4 1 3 1 2 2 1 2 1 2 4

2 1 2 4 1 2 2 1 4 1 3 2

3 1 4 1 2 2 1 4 1 3

System 1 of musical notation. It consists of a grand staff with a treble clef on the upper staff and a bass clef on the lower staff. The key signature has three flats (B-flat, E-flat, A-flat) and the time signature is common time (C). The music is written in a simple, stepwise fashion. Above the treble staff, there are fingerings: 3, 4, 1, 3, 1, 3, 3, 1, 3, 1, 4, 3. Below the bass staff, there are fingerings: 3, 1, 4, 1, 3, 3, 1, 4, 1, 3.

System 2 of musical notation. It consists of a grand staff with a treble clef on the upper staff and a bass clef on the lower staff. The key signature has three flats and the time signature is common time. Above the treble staff, there are fingerings: 3, 1, 4, 1, 3, 3, 1, 4, 1, 3. Below the bass staff, there are fingerings: 3, 1, 4, 1, 3, 3, 1, 4, 1, 3.

System 3 of musical notation. It consists of a grand staff with a treble clef on the upper staff and a bass clef on the lower staff. The key signature has three flats and the time signature is common time. Above the treble staff, there are fingerings: 2, 1, 3, 1, 4, 4, 1, 3, 2. Below the bass staff, there are fingerings: 3, 1, 4, 1, 3, 3, 1, 4, 1, 3.

System 4 of musical notation. It consists of a grand staff with a treble clef on the upper staff and a bass clef on the lower staff. The key signature has three flats and the time signature is common time. Above the treble staff, there are fingerings: 1, 4, 1, 4, 4, 1, 4, 1. Below the bass staff, there are fingerings: 5, 1, 3, 1, 1, 3, 1, 5.



Get your *FREE* music at:  
[www.gmajormusictheory.org](http://www.gmajormusictheory.org)

